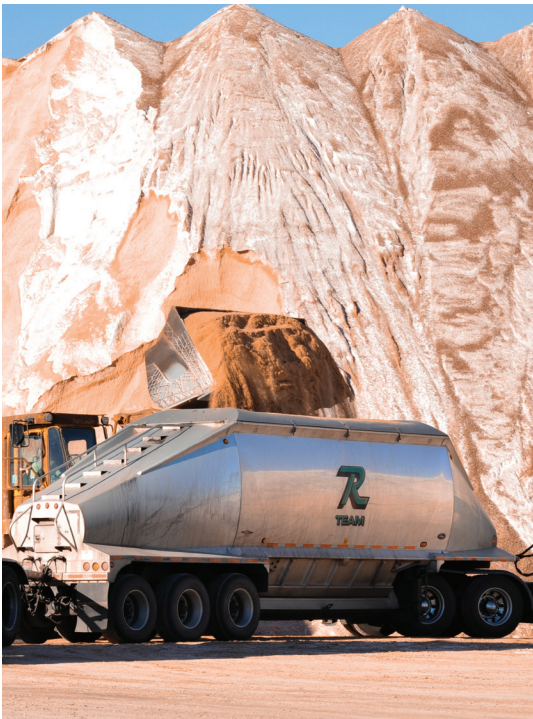




REDMOND™

ICE SLICER RS

HIGH PERFORMANCE GRANULAR ICE MELT



MELTS FASTER, LASTS LONGER

Brines 5x faster than white salt; prevents refreezing for longer & at lower temperatures



REDUCES CORROSION

20% less corrosive to infrastructure and equipment than traditional road salts



QUICKLY RESTORES TRACTION

Unique gradation mix creates immediate and lasting traction without the need for aggregates



SAFER FOR ENVIRONMENT

60+ natural minerals that benefit roadside ecology; protects waterways; reduces air PM pollution



1500 lb Tote

PN # 500604
UPC 758364500604

2000 lb Tote

PN # 500499
UPC 758364500499

2500 lb Tote

PN # 500918
UPC 758364500918

**BULK ORDERS &
CUSTOMER SERVICE**

☎ 877-675-4237

✉ info@iceslicer.com

✉ Redmond Minerals Inc.
PO Box 219
Redmond, UT 84652

INGREDIENTS

Complex chlorides (*sodium chloride, magnesium chloride, potassium chloride, calcium chloride*) plus over 60 naturally occurring minerals

TESTIMONIALS

“ Roads were usually dry 6 to 12 hours ahead of other areas when using Ice Slicer!
-Colorado DOT

We keep roads open we couldn't keep open before! -Wenatchee, Washington

I'm always looking for better and more cost effective ways to deal with our many black ice and freezing rain events. Ice Slicer has outperformed all other brands we have used.
-Magnum Enterprises (Ketchikan, Alaska)

Ice Slicer gives good traction - we no longer need to use sand. There are no more complaints about sandy grit damaging property & windshields. -Casper, Wyoming

In our first year using Ice Slicer, we reduced crashes 45%. -Arizona DOT ”

FREQUENTLY ASKED QUESTIONS

WHERE IS ICE SLICER SOURCED?

Ice Slicer is harvested from the Redmond Mine, an ancient sea mineral deposit located in central Utah. This rich mineral source is the foundation for a wide family of all natural Redmond Minerals products, enjoyed by many different industries. Ice Slicer is proud to be made in the U.S.A. with ingredients sourced directly from American soil.

SCAN CODE BELOW FOR MORE FAQs

KNOWLEDGE LIBRARY

SCAN FOR:



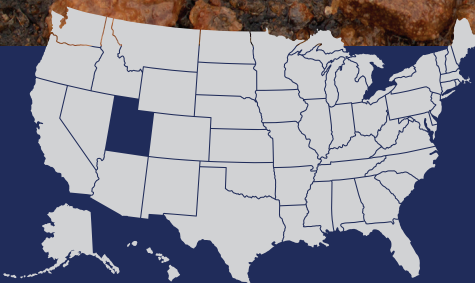
- Videos
- Blogs
- FAQs
- Safety Data Sheets
- Other digital resources

RECOMMENDED APPLICATION INSTRUCTIONS:

Ice Slicer (without aggregates like sand, cinders, or gravel) should be applied at an average of 150-300 lbs. per lane mile.

Application rates can vary depending on a variety of road and storm conditions such as: road temperature, air temperature, precipitation rate, traffic flow, sun exposure, and more.

Scan code on left for blog on deicer application rates and when to increase and decrease product based on storm and traffic conditions.



24/7 EMERGENCY ORDERING: Contact us anytime!

UTAH: Direct from Redmond

OUTSIDE UTAH: EnviroTech Services

1-877-675-4237
info@iceslicer.com

1-800-369-3878
info@envirotechservices.com

