



REDMOND™

# UDDER MUD

HYDRATED BENTONITE CLAY

## NATURAL MASTITIS TREATMENT

Reduce swelling, relieve discomfort, inhibit infection for all lactating animals



## FOR TRADITIONAL + ORGANIC HERDS

The perfect tool to use on its own or in conjunction with veterinarian directed antibiotic therapy



## BIND TO TOXINS

Bentonite clay naturally binds to toxins to promote healing and provide relief



## VERSATILE PROTECTION

Can be applied to sores, irritations, bites, and seal the area to keep away flies and infection



8 lb Bucket (1 gallon)

PN # 602506

UPC 758364602506

**BULK ORDERS &  
CUSTOMER SERVICE**

☎ 866-735-7258

✉ [hello@redmondagriculture.com](mailto:hello@redmondagriculture.com)

✉ Redmond Minerals Inc.  
PO Box 219  
Redmond, UT 84652

## INGREDIENTS

Purified water, bentonite (montmorillonite) clay, peppermint essential oil, menthol, unrefined salt, tea tree oil

## TESTIMONIALS

“ Udder Mud pulls the edema out faster than anything I have ever used.   
 -Rick T.

Love, love love it! Have used Udder Mud for 2 years on my jerseys. Does a great job on the occasional owies. We use on the teats after milking. Particularly helpful in the winter. Also use on those areas that tend to be problematic in the between the quarters on bid udders.   
 -Laurie N.

Udder Mud is easier to apply than the leading product I had been using. It also stays on the udder better.   
 -Brad M.

Udder Mud rubs on well and does not fall off the udder as some other products. It then clears up much quicker than other products that I have used. Udder Mud pulls down the swelling very fast on fresh cows.”   
 -Larry E.

## FREQUENTLY ASKED QUESTIONS

### WHEN SHOULD I USE UDDER MUD?

Use Udder Mud as a natural mastitis treatment for all lactating species and for efficient relief for sore, swollen and injured tissues.

### HOW DO I USE UDDER MUD?

Massage a generous amount of the clay on the affected area and let it set (it does not need to absorb completely). Most customers suggest leaving a ¼ inch layer on the skin. Repeat after each milking.

## KNOWLEDGE LIBRARY

### SCAN FOR:



- Product Dimensions
- Blogs
- Videos
- Mineral Analysis
- Other links

## RECOMMENDED APPLICATION INSTRUCTIONS:



cows



sheep + goats



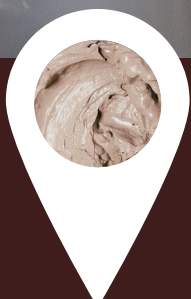
swine

For all lactating animals

Massage a generous amount of the clay on the affected area and let it set (it does not need to absorb completely).

Most customers suggest leaving a ¼ inch layer on the skin.

Repeat after each milking.



**FOR DEALERS:** Redmond increases your visibility



Scan to learn how to become a Redmond dealer



Scan to get more clicks and sign up for Locally

